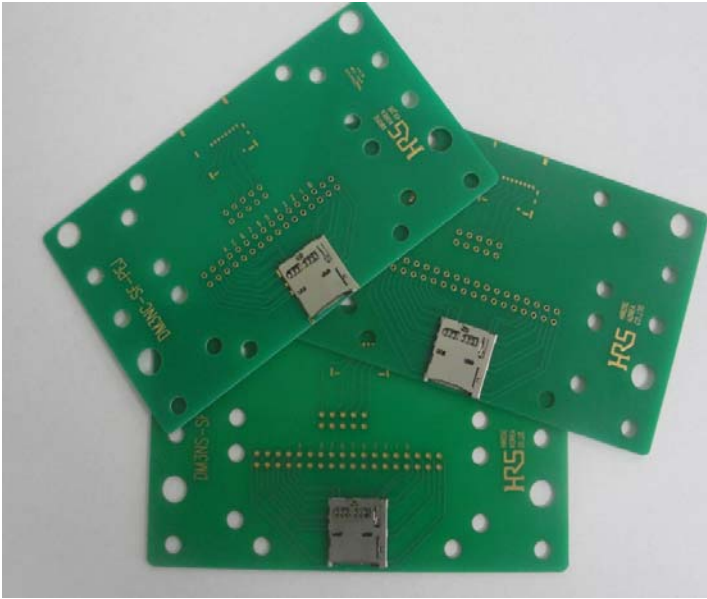


DM3N - SERIES



■ 특징

1. Low Height H1.25mm의 저배 type구조
2. 조작성이 편리한 PUSH-PUSH TYPE 적용
3. CARD 역삽입 방지 구조
4. CARD의 강제발거 방지 기능
5. CARD detect Switch 기능 부착
 - 1) CARD eject position 및 CARD lock position 상태 감지.

■ 용도

- Mobile Phone, camera, PDA etc

■ 제품 규격

Rating	Current 0.5A	Operating temperature range	Storage temperature range
	Voltage 125V	- 30 °C ~ + 85 °C	- 40 °C ~ + 85 °C

Item	Specification	Conditions
1.Contact resistance	Initially 60mΩ Maximum	Open voltage 20mV AC MAX
2.Voltage proof	No flashover or breakdown	Signal:150V others:375V AC for 1 minute
3.Insulation Resistance	Initially 100MΩ Minimum	Measured within 1 minute after applying 50
4.Card insertion/ejection Force	3N to 7N	Measured by applicable card at 25±3mm/min
5.Mechanical operation	Contact Resistance : 100mΩ Max No mechanical damage shall occur on the parts	1,000 times insertion and withdrawl shall be made at the cycle rate less than 10 cycles per 1minute * Card surface shall be cleaned by air bl
6.Moisture Resistance	Temperature : 40±2°C	Contact Resistance : 100mΩ Max Insulation Resistance : 100MΩ Min
	Relative Humidity : 90~95%	
	Duration : 72Hr	
7.Resistance to Soldering heat	Reflow : PROFILE :260°C MAX 10s, 230°C and over . 30~60s.	No deformation of components affecting performance.

■ 부품별 적용 원재료

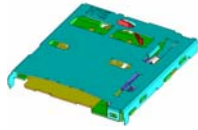

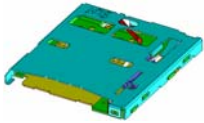
Part	Material	Finish	Remarks
INSULATION BASE	LCP	BLACK	UL94V-0
SH-CONTACT	PHOSPHOR BRONZE	GOLD OVER NICKEL PLATING	-
COVER	STAINLESS STEEL	GOLD OVER NICKEL PLATING	-
EJECT MOLD	PA46	BLACK	UL94HB
DETECT-A	PHOSPHOR BRONZE	GOLD OVER NICKEL PLATING	-
SPRING	STAINLESS STEEL	---	-
PIN	STAINLESS STEEL	---	-

* RoHS지침 및 유해 물질 관리 기준에 적합한 제품임.

■ Part Number의 구성

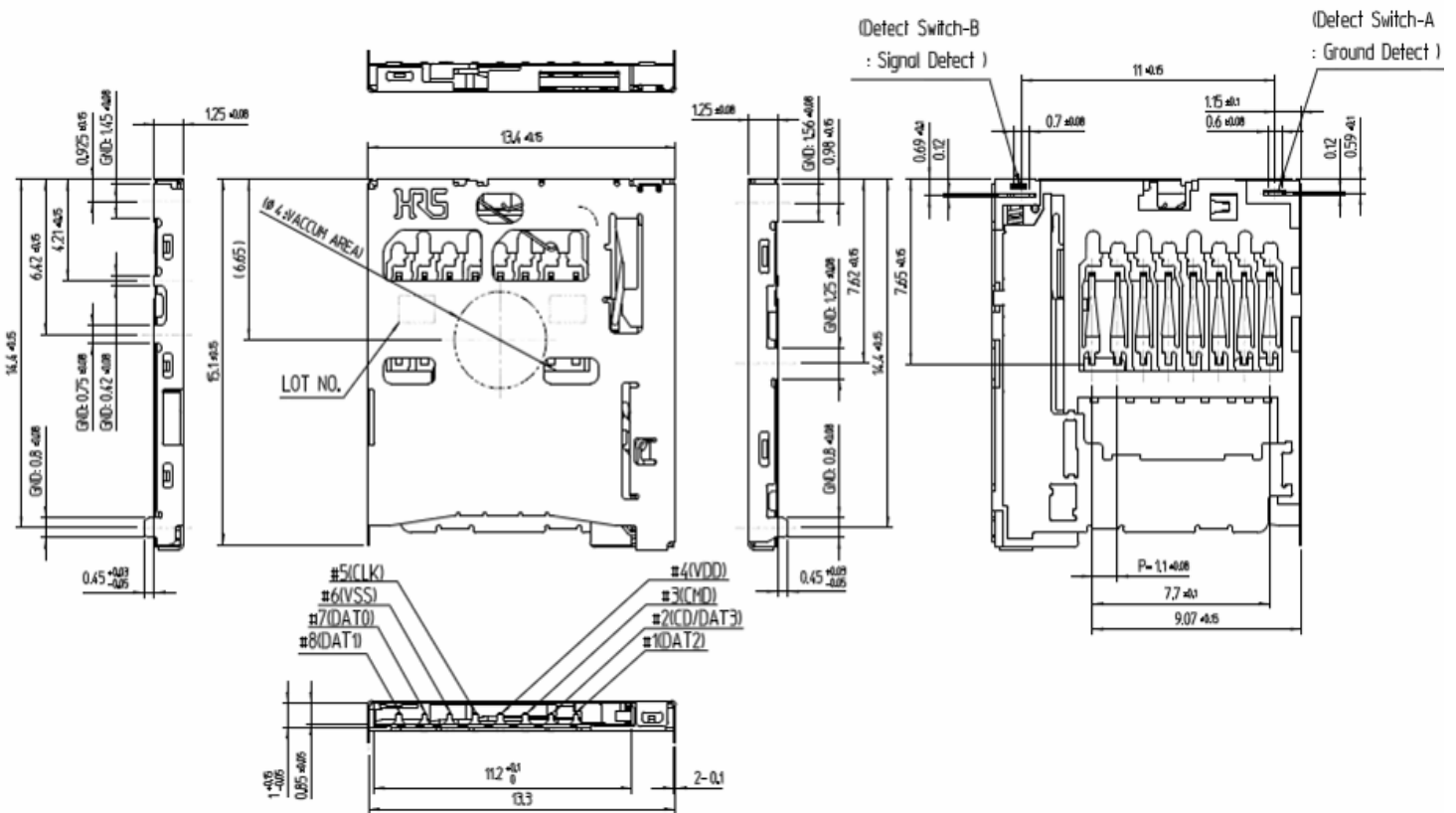
DM3N # - SF - PEJ
 ① ② ③ ④

①	Serial Name	DM3N
②	Connector type	Push-Push (ejection mechanism),
		NS,NC: Dip mounting (Standard)
		ND: Top board mounting
③	Termination type	SF Right-angle SMT (Standard)
④	Card ejection code	PEJ (Push insert/push eject)

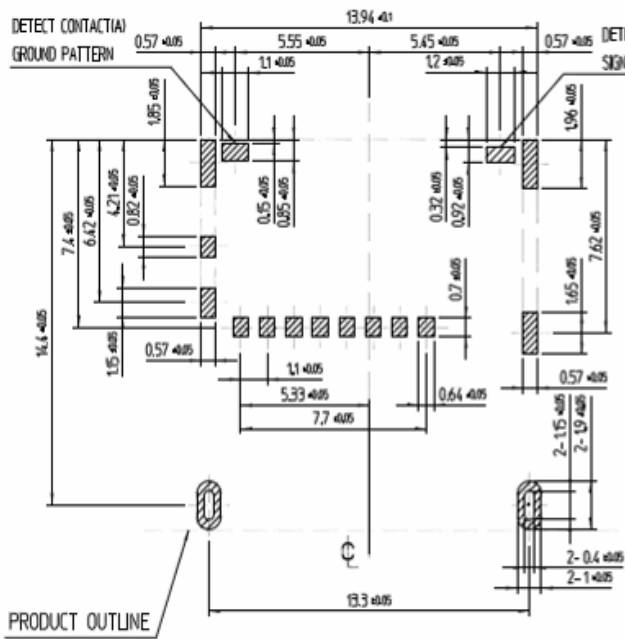
NO	MODEL	DM3NS-SF-PEJ	DM3NC-SF-PEJ	DM3ND-SF-PEJ
1	Product Image			
2	SMT TYPE	DIP TYPE	DIP TYPE	SMD TYPE
3	SIZE	13.4*15.1*1.25	13.4*15.1*1.25	13.4*15.1*1.25
4	MOUNTING AREA	202.34mm ²	202.34mm ²	202.34mm ²
5	DETECT SWITCH OPERATION	NORMAL OPEN	NORMAL CLOSED	NORMAL OPEN
6	PACKING	1,500PCS / Reel	1,500PCS / Reel	2,000PCS / Reel

■ DM3NS-SF-PEJ

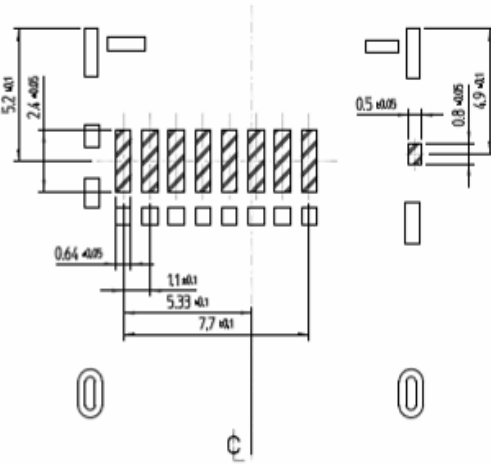
DRAWING



PCB PATTEN RECOMMEND

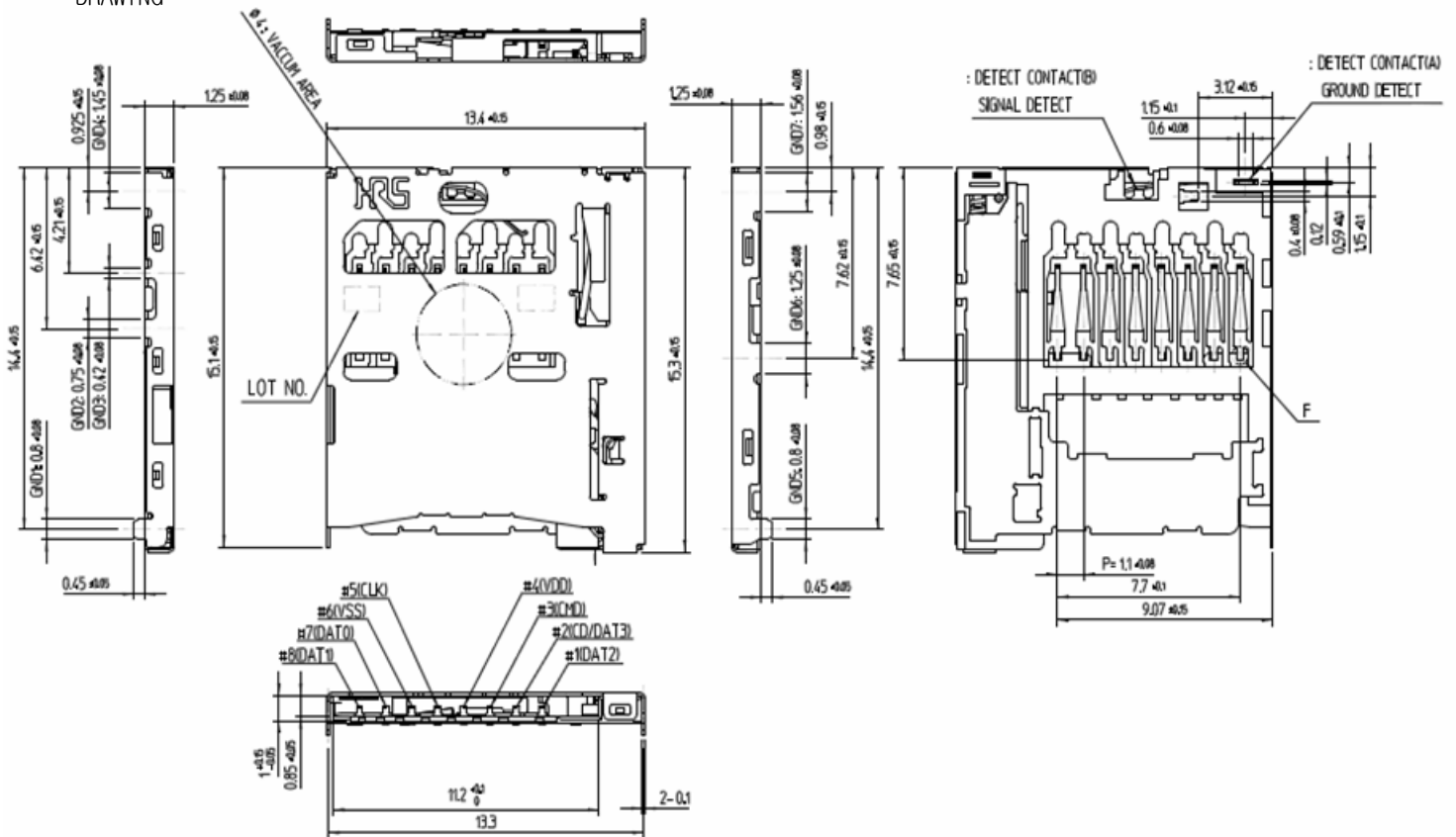


RECOMMEND P.C.B LAYOUT
RECOMMEND METAL MASK T=0.12mm

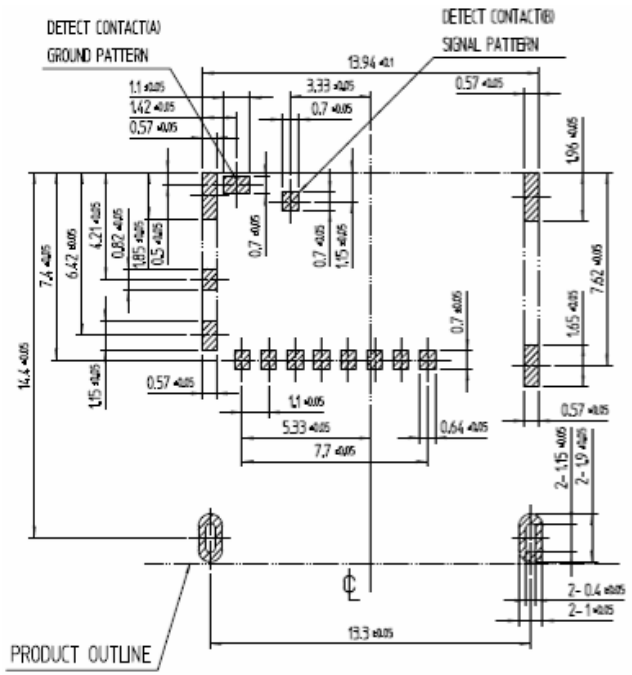


■ DM3NC-SF-PEJ

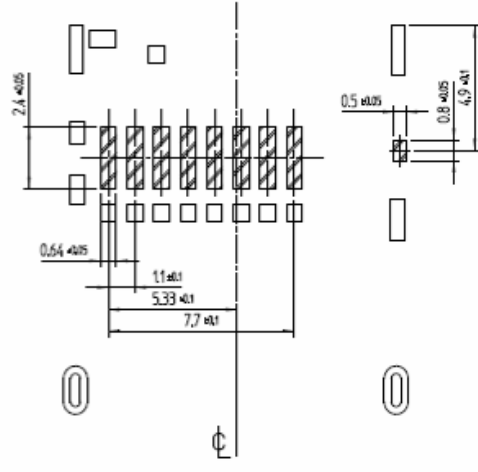
DRAWING



PCB PATTEN RECOMMEND

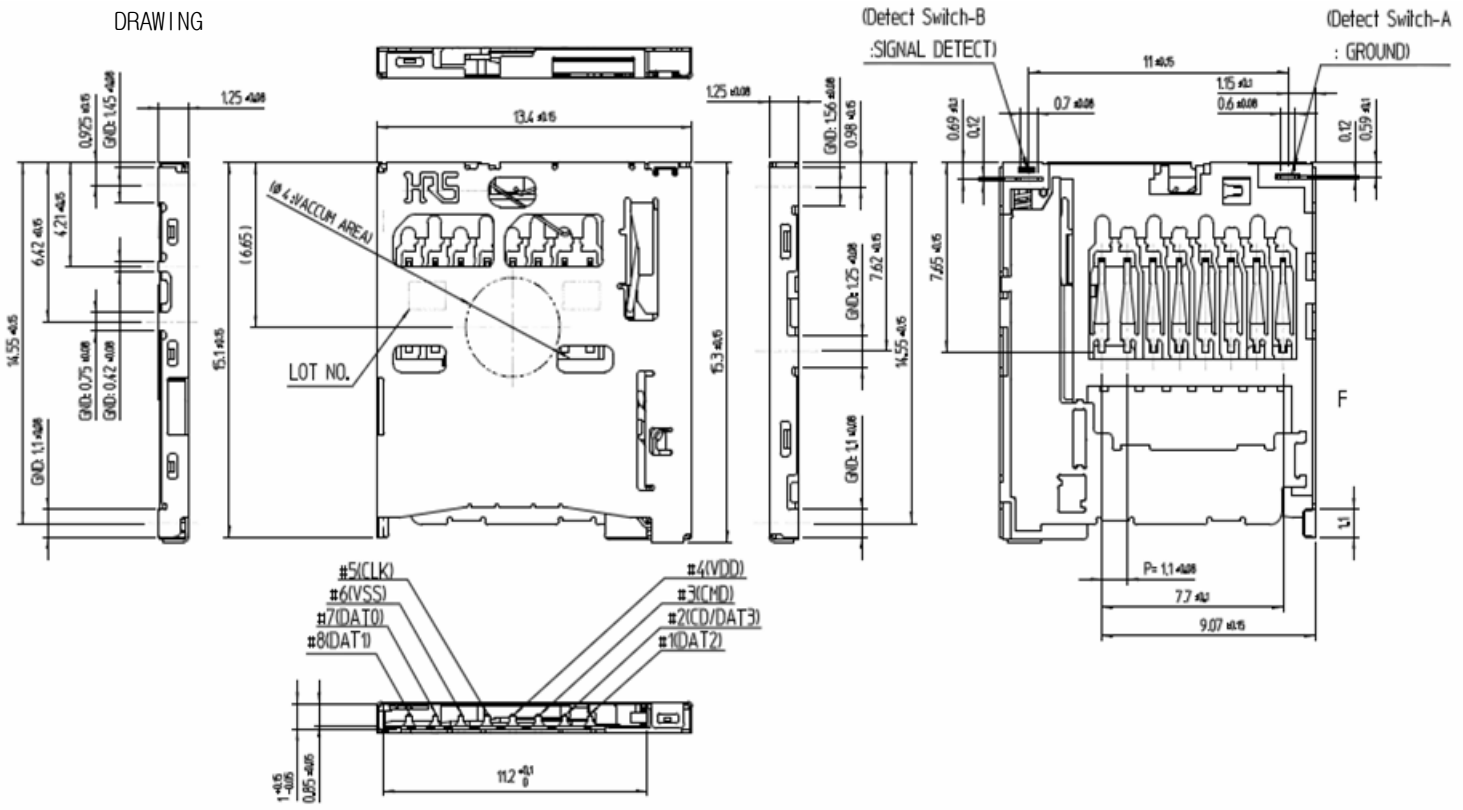


RECOMMEND P.C.B LAYOUT
RECOMMEND METAL MASK T=0.12mm

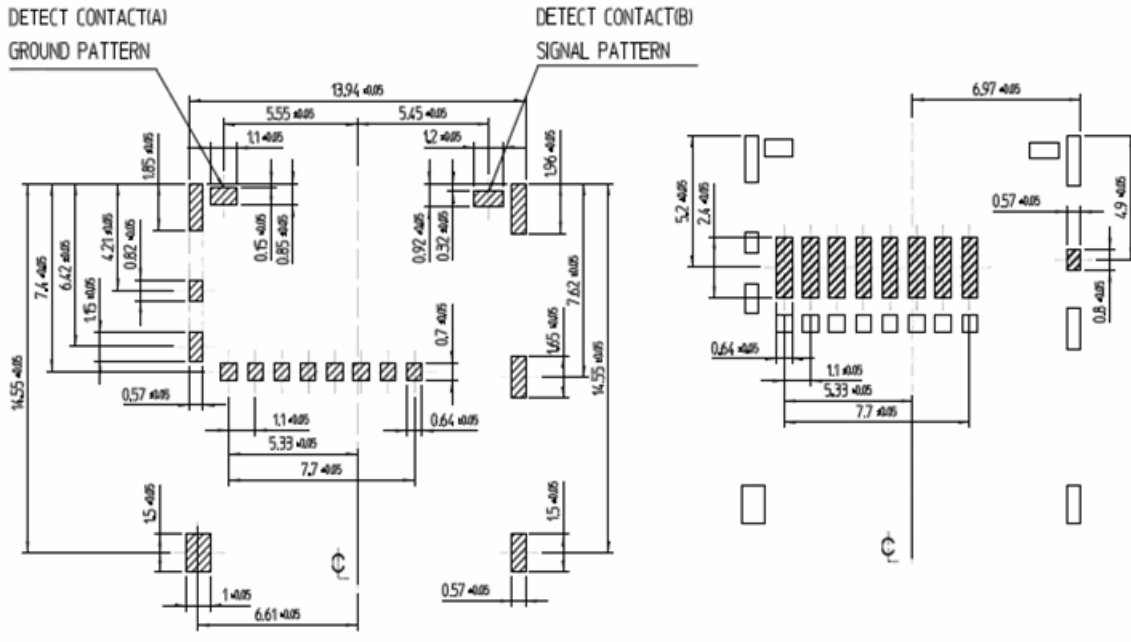


■ DM3ND-SF-PEJ

DRAWING



PCB PATTEN RECOMMEND



RECOMMEND P.C.B LAYOUT
 RECOMMEND METAL MASK T=0.12mm

NO PATTERN AREA